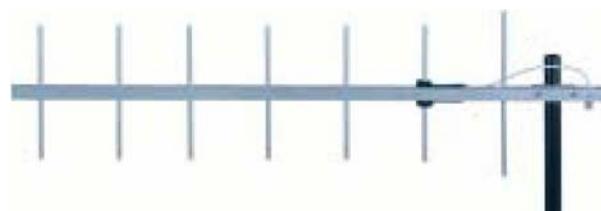


## RadioPLC<sup>®</sup> directional 434 MHz yagi-antennas.



### 7-element yagi 10.4 dBd directional yagi-antenna Xtra-heavy duty.

**Rugged and weatherproof:** The construction of our extra heavy duty yagis feature 1" aluminum U-channel with 3/8" solid elements. All exposed areas are coated with UV-resistant polyester. The balun assembly is filled and sealed with elastomeric thermoplastic.

**Lightweight and Durable:** These antennas are easily installed by one person.

**Termination:** Direct N connection to the balun.

**Lightweight:** The antenna are lightweight at less than 2kgs but are designed to easily withstand winds of over 200 km/h.

**Simple installation:** Using the mounting kit, installation takes only minutes.

#### ELECTRICAL SPECIFICATIONS:

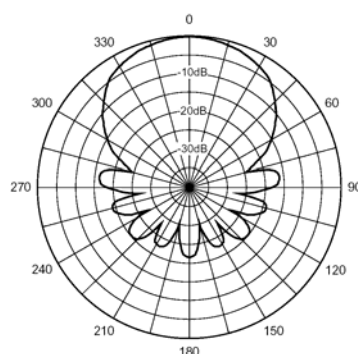
**GAIN:** 10.4dBd FIB 20dB  
**VSWR:** <2:1  
**POWER RATING:** 300 watts  
**IMPEDANCE:** 50 ohms  
**HORIZ BEAMWIDTH:** 55 degrees  
**VERT BEAMWIDTH:** 50 degrees

#### MECHANICAL SPECIFICATIONS:

**MATERIAL:** 1" aluminum U channel boom  
 3/8" solid elements  
**FINISH:** UV inhibited polyester coat  
**LENGTH:** 110 mm  
**WEIGHT:** <2 kilograms  
**MOUNT:** 520 mm mast, stainless hardware  
**FLAT PLATE AREA:** 0.038 m<sup>2</sup>  
**WIND RATING:** 200 km/hour  
**WIND LOAD:** 13 kg.

**Price:** 3165 SEK

*Horizontal Pattern*



*Vertical Pattern*

